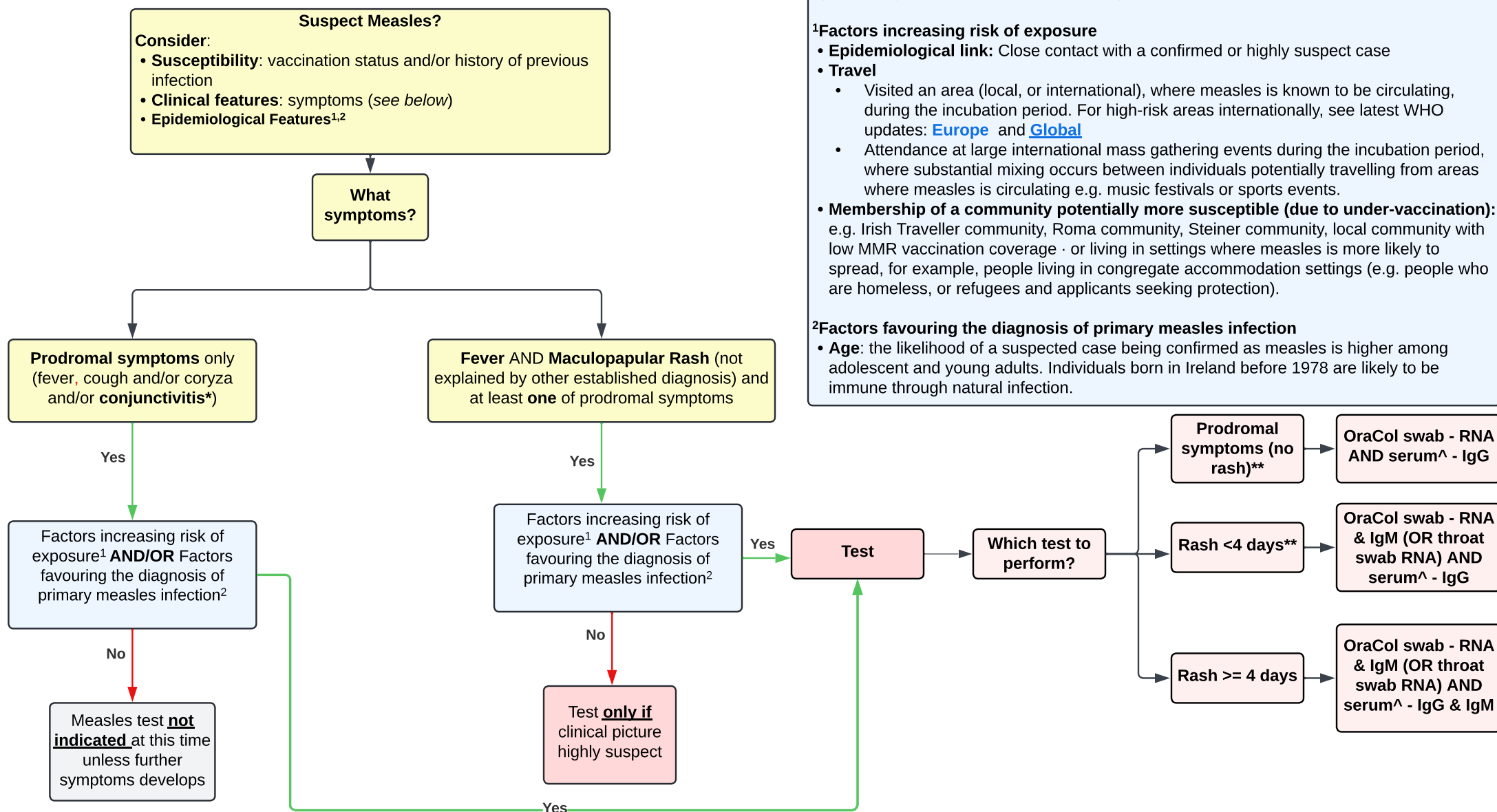


NB If **testing** for measles, **report immediately to Regional Department of Public Health** (contact details [here](#)) & **advise patient to isolate** until results available.



Notes:

* NB Conjunctivitis is often the dominant symptom of the prodrome

** An OraCol swab taken during the prodromal phase (or early in the infection) that is RNA negative may have to be repeated if there is still a strong clinical suspicion of measles.

[^] Recognising that phlebotomy may not be feasible on younger patients or where it is not possible to safely bring a patient into a healthcare setting due to infection, prevention and control (IPC) limitations.